

Soup Warmer User Manual

Adexa

Read these introduction before using & keep it for future reference.

1. CAUTION! HOT SURFACE!
2. This soup kettle warmer is not designed to cook soups or sauces, nor is it designed to rethermalize cold or frozen products. Just for food keep warm.

Warnings

1. This appliance must be placed on a level surface.
2. Do not leave this appliance unattended while it is in use.
3. Never immerse the appliance in water.
4. Do not operate the kettle while it is empty.
5. Do not overfill the appliance with water.
6. Never move or carry the kettle when it is "ON" or if it is full of hot liquids.
7. Do not attempt to repair or replace the power cord if it becomes damaged. Contact a qualified service agent.
8. Be careful not to touch any hot surfaces. Make sure the power cord does not come in contact with any hot surfaces.

Operation

1. Carefully unpack the soup kettle warmer and inspect it for damage.
2. Place the warmer on a solid, level surface.
3. Please add water between the aluminum container and the stainless steel container, the water should not exceed the maximum water level "MAX". Never over-fill with water.
4. Attach the lid over the top rim. Insert food liner thru the top rim and into the container. Set the control dial to the maximum heat setting. (Temperature range between 30-85°C).

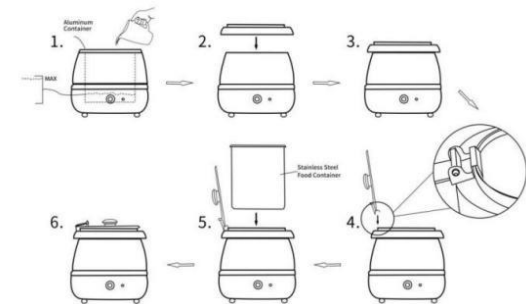
5. Turn the warmer on. The indicator light will glow, showing that the unit is on. Adjust the temperature control dial to the correct setting.
6. Once the kettle has reached the desired temperature, adjust the temperature control dial to a lower setting. It is recommended that the lowest possible setting that maintains food-safe serving temperatures be used.
7. Always keep the hinged lid attached and closed when not serving.
8. Periodically remove the food container to check water level. Add hot water when necessary.

Cleaning and Maintenance

Regular cleaning will help prolong the soup kettle's life and preserve its appearance.

1. Always unplug the kettle when not in use, when filling, or when cleaning.
2. Spilled food should be removed immediately from painted exterior surfaces and the top collar, with a damp soapy cloth.
3. Do not use harsh or abrasive chemicals or scouring agents.
4. Never immerse the appliance in water.

How to assemble?



Imported by: Adexa Direct Limited

Unit 1 Swift Point, Cosford Lane, Swift Valley Ind Est, Rugby CV21 1QN
United Kingdom