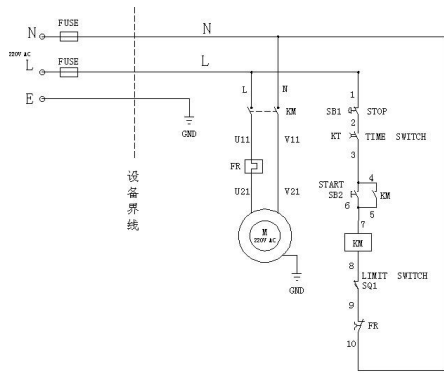
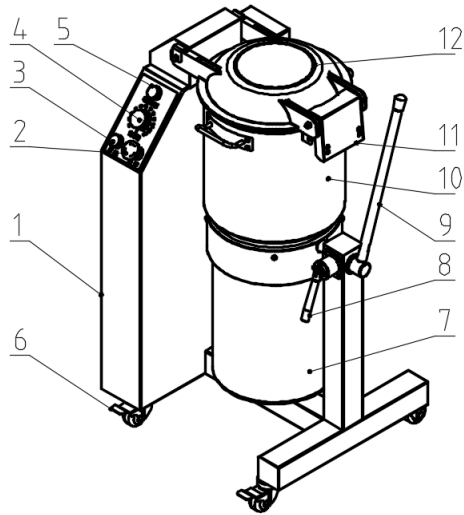


VIII. Circuit Diagram



IX. Structure



2.emergency stop switch	3.starting switch	4.timer
6.caster	7.motor cover	8.spring handle
10.barrel	11.cover fastening	12.transparent cover

Imported by: Adexa Direct Limited

Unit 1 Swift Point, Cosford Lane, Swift Valley Industrial Estate, Rugby, CV21 1QN, UK

service@adexa.co.uk , T:+44 1788 222 410



Adexa

Floor Type Multifunctional Cutter

QS18G QS35G

User's manual



I .Product Instruction

This Multifunctional Cutter is our company's newly designed, researched and developed, exclusive produced machine, mainly used in cutting various kinds of meat, flavoring food, fruit and vegetable to granule, mince and mush. All the spare parts in touch with the food are made of good stainless steel. The unique cutting method, adopting the spiral cutting knives, makes the food fiber damage at lowest. This machine has the following obvious advantages: high cutting speed, low heating up and excellent cutting operation.

This machine is installed with safety switch handle, opening the barrel cover would cut off the power and users need to turn on the machine again to let it work, safer to operate.

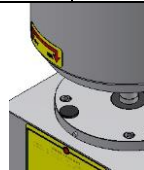
Pretty appearance, easy operation, large barrel volume but small size, enables this machine widely used in hotels, restaurants, enterprise dining rooms and etc.

II .Technical Parameters

Model	Power (kW)	Volt (V)	Freq (Hz)	Blade speed . r/min	N.W. (Kg)	Dimension (mm)	Capacity (L)
QS18G	2.2	230	50	1400	68	620x450x945	13
QS35G	5.5	380	50	1400	102	670x530x1050	35

III .Operation

- 1.Keep machine stand smoothly on dry ground
- 2.Put the machine near the power supply,be sure the voltage is comply with machine's request and grounded
- 3.Put the barrel on the chuck, push down and lock it by clockwise (pls see the picture)
- 4.Then insert the knife rest to rotor shaft and pour foods into barrel, close the cover(there is a protection device, when the cover is open,machine can not work)
- 5.Press the button, let machine start to work.Choose working time on timer,different foods have different processing time.Usually it is 1-2 minutes.(when there is an abnormal noise,pls shut off power and examine the machine)



6.After working, shut off power,open the cover and take out foods and knife rest. Push down the barrel by counter-clockwise rotation and clean the barrel

IV .Method of Barrel dumping

- 1.Open "Transparent Top Cover"
- 2.Pull or press the spring handle, and at the same time press the dump handle .When the barrel turns to the position, the "spring handle" will automatically limit the position.

V .Method of barrel return

- 1.Pull or press the spring handle, and at the same time press the dump handle .When the barrel turns to the position, the "spring handle" will automatically limit the position.
- 2.Open "Transparent Top Cover"

VI .Usage Of Barrel

- 1.To fix barrel: make the arrow mark <discharge> on barrel aligned with red sign <●> >,then rotate the barrel by clockwise to make <fix> aligned with <●>
- 2.To discharge the barrel: rotate the barrel by anticlockwise to make <discharge> aligned with <●>, and take barrel down
- 3.In order to avoid a hazard,pls pay attention to the blade when pouring and prevent food from leaking out.Pls cleaning blade and barrel after each use.

VII .Notice

- 1.Attention to avoid the children playing the machine
- 2.Do not open the cover when the machine working
- 3.Do not swash the machine
- 4.If the supply cord is damaged, it must be replaced by the manufacturer or its service agent or a similarly qualified person in order to avoid a hazard.
- 5.This appliance is not intended for use by persons (including children) with reduced physical, sensory or mental capabilities, or lack of experience and knowledge, unless they have been given supervision or instruction concerning use of the appliance by a person responsible for their safety.
- 6.Correct disposal of this product.

