

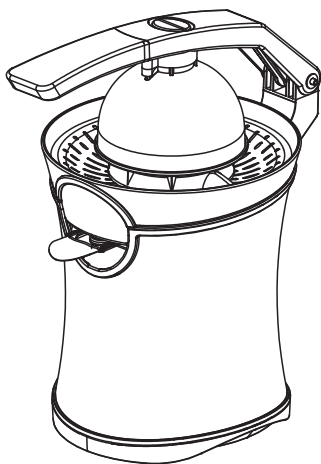
Adexa

CATERING EQUIPMENT DIRECT

INSTRUCTION

CITRUS JUICER

Model No: JC203

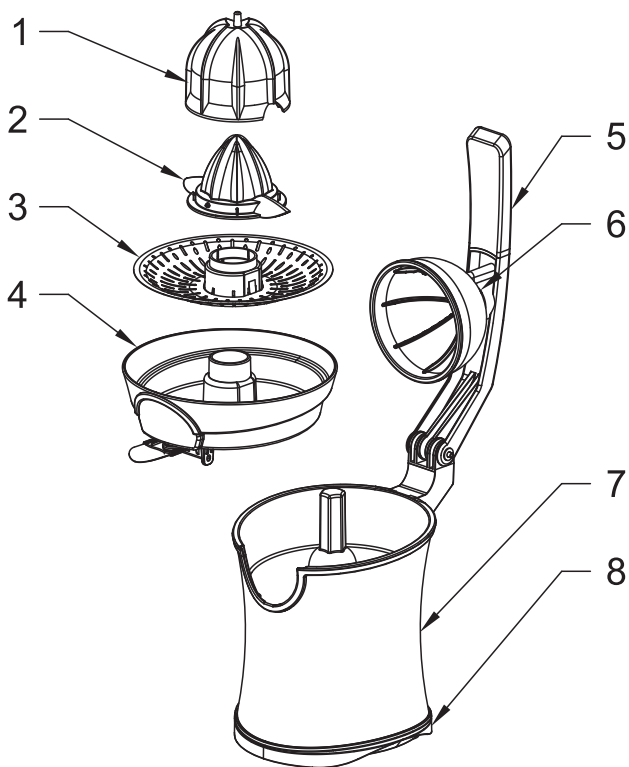


I. Main technical parameters:

Rated Voltage/Frequency: 220-240V~/50Hz

Rated Power: 160W

PARTS NAME



1. BIG CONE	2. SMALL CONE	3. SIEVE
4. BOWL	5. HAND SHANK	6. COVER
7. BODY	8. POWER CORD	

IMPORTANT SAFEGUARDS

When using the citrus juicer, basic safety precautions should always be followed including the following:

Read all instructions before using.

1. To protect against electrical shock, do not immerse cord, plug, or citrus juicer in water or other liquid.
2. Close supervision is necessary when any appliance is used by or near children.
3. Unplug from outlet when no in use, before putting on or taking off parts and before cleaning. Remove plug by gripping plug body and pull out of the outlet. Never yank or twist cord to unplug.
4. Avoid contacting moving parts.
5. Do not operate this appliance with a damaged cord or plug, or after the appliance malfunctions, or has been damaged in any manner, return the citrus juicer to the retail location where it was purchased for examination, repair, or adjustment.
6. Use this appliance only for its intended use as described by this manual. Do not use accessory attachments without recommending by the Electronics.
7. Do not use outdoors or operate where oxygen is not being administered or in the presence of explosive and/or flammable fumes.
8. Do not let cord hang over edge of table or counter, or touch hot surfaces.

9. Any service of the citrus juicer should be performed by the retail location where it was purchased.
10. To disconnect citrus juicer, wait until motor stops, then remove plug from electrical outlet.
11. Do not operate unattended. Make sure the motor stops completely before disassembling. Unplug after each use.

SAVE THESE INSTRUCTIONS

Preparing the Citrus Juicer for Use

Always clean cone, sieve, sieve holder and spout before you use the appliance for the first time (see 'Cleaning')

How to use your appliance (FIG .1)

1. Place the appliance on a firm, level surface out of the reach of children.
2. Plug in power cord
3. Put the bowl on place correctly.
4. Put on the sieve.
5. Then insert the cone.
6. Switch the appliance on by pressing the halved fruit firmly onto the cone. Use the handle to press the half fruit, juice will be extracted quietly and quickly.

(For large orange you have to use big and small cones together, lemon is too small to be squeezed & pressed with the handle, please press with your hand manually)

7. Put a vessel under spout. Flip the spout down towards the vessel, the instant flow system guides juice directly into vessel.
8. After you have finished, flip the spout up to prevent dripping and spilling juice.
9. Always clean the appliance immediately after use (see in 'Cleaning')

Clean

1. Unplug cord from electrical outlet. Remove the cone, sieve and bowl from the appliance.
2. Flip the spout down fully in order to clean it properly. The spout cannot be detached from the appliance.
3. Clean the cone, sieve and vessel by using warm soapy water. Dry all parts. Do not clean these parts in a dishwasher.
4. Clean the motor unit by using a moist cloth Never immerse the motor unit in water or rinse it under the tap.

Notes

Notes

Adexa

CATERING EQUIPMENT DIRECT

Adexa Direct Limited
Ground Floor, Unit 1
214 Purley Way
Croydon CR0 4XG UK
Telephone: 01483 931040
Email: service@adexa.co.uk
URL: <https://adexa.co.uk>

