



FORK-SPOON POLISHER

CONTENTS

A	GENERAL INFORMATION.....	Page 2
A1	PRODUCT DESCRIPTION	Page 3
A2	TECHNICAL INFORMATION	Page 3
A3	TRANSPORTATION	Page 4
A4	UNPACKING	Page 4
B	INSTALLATION	Page 4
C	SAFETY INSTRUCTIONS	Page 5
D	OPERATION	Page 6
E	CLEANING & MAINTENANCE.....	Page 7
F	TROUBLESHOOTING	Page 8
G	SPARE PART LIST- EXPLODING DRAWING.....	Page 9
H	ELECTRIC CIRCUIT SCHEMA	Page 13

A GENERAL INFORMATION

Before installing the appliance, read operation and maintenance instructions carefully. Wrong installation and part changing may damage the product or may cause injury on people. These are not in our company's responsibility to damage the appliance intentionally, negligence, detriments because of disobeying instructions and regulations, wrong connections. Unauthorized intervention to appliance invalidates the warranty.

1. This instruction manual should be kept in a safe place for future reference.
- 2. Installation should be made in accordance with ordinances and security rules of that country by a qualified service personnel.**
3. This appliance has to be used by trained person.
4. Please turn off the appliance immediately in the event of malfunction or failure. The appliance should be repaired only by authorized service personnel. Please demand original spare part.

FORK-SPOON POLISHER

A1 PRODUCT DESCRIPTION

*The Professional Fork-Spoon Polisher, that provides high efficiency has been designed to be used in industrial kitchens.

Product Code	Dimensions (mm)	Weight (kg)	Packaging Dimensions (mm)
EMP.CKP.01	560x550x410	50	640x640x520
EMP.CKP.02	660x650x700	82	850x690x770

A2 TECHNICAL INFORMATION

Product Code	Capacity (piece/h)	Polisher Amount (kg)	Power (KW)	Operating Voltage (V)	Cable (mm ²)	Fuse (A)
EMP.CKP.01	3000	3+2	0,6	220	3x1,5	6
EMP.CKP.02	7000	5+3	0,80	220	3x1,5	6

A3 TRANSPORTATION

*This appliance can be moved by hand from area to area. Do not crash and drop the appliance while transporting.

A4 UNPACKING

*Please unpack the package according to the security codes and ordinances of current country and get rid from the pack. Parts which contacts with food are produced by stainless steel. All plastic parts are marked by material's symbol.

*Please check that all the parts of appliance had come completely and if they are damaged or not during the shipping.

B INSTALLATION

*Please place the product to straight and sturdy ground, please take necessary steps against possibility of overturn.

*Technician who will serve for installation and service for the appliance must be professional on this subject and must have installation and service licenses by the company.

*Connection to Electric Power Supply must be done by authorized person.

*Please be sure that the voltage connected to appliance must be equal with the voltage which is on appliance's label.












This appliance must be connected to an earthed outlet in accordance with safety rules and standards.

*Appliance's earthing must be connected to earthing line on panel which is nearest to electric installation.

*Connection to the main fuse and leak current fuse must be done in accordance with the current regulations.

FORK-SPOON POLISHER

C SAFETY INSTRUCTIONS

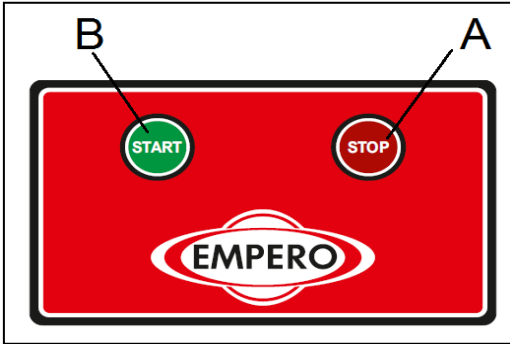
-  *Do not use the appliance in insufficient lighted place.
-  *Do not touch the moving attachments while the appliance operates.
-  *Do not install the appliance in the presence of flammable or explosive materials.
-  *Do not operate the appliance when the machine is empty.
-  *Do not load so less or more than appliance's capacity.
-  *Do not attempt to use the appliance without suitable protective equipments.
-  *Because of any reason if there is a fire or flame flare where the appliance is used, turn off all gas valves and electric contactor switch quickly and use fire extinguisher. Never use water to extinguish the fire.
-  *All the damages because of not having earthing connection will not be on warranty.
-  *Do not insert the products into the machine if they are dry.

D OPERATION


*Control Panel;

A : Stop Position

B : Start Position



*Operating;

-  Before start to using the device wait 20 min. running empty until device will heated.
- Plug in the appliance.
 - In order to operate the appliance, press START button.
 - After operating the appliance, wait the appliance to be heated for 10 minutes.
 - Place the washed spoons and forks into the machine.
 - When the resistances heat, the spoons and forks get dry and polished
 - UV lamp in the appliance provides hygiene.
 - The polisher materials that remain on product are cleaned by fan
 - The products that are dried and polished drops to the basket.
 - After the operation is completed, press STOP button.

FORK-SPOON POLISHER

E CLEANING & MAINTENANCE

➤ **CLEANING AND MAINTENANCE AFTER EVERY USE**

- Always turn off the appliance and disconnect from the power supply before cleaning.
- Clean all the surfaces of the appliance with moist cloth and dry after every use.
- Do not use abrasive cleaning chemicals as these can leave harmful residues.
- Do not clean the appliance by spraying water directly, otherwise electric motor may get damaged.

➤ **PERIODIC CLEANING AND MAINTENANCE**

- Maintenance should be done by qualified person.
- Get the periodic maintenance of the appliance once in every 15 days.
- Check the resistances in periodic times.
- Change the polishers of the appliance once in 30-45 days according to frequency of use. Otherwise are not dried and polished enough.
- Clean the fan in periodic times.

F TROUBLESHOOTING

THE APPLIANCE DOESN'T OPERATE	<ol style="list-style-type: none">1. Check if the appliance is plugged in.2. Check the electrical connections and voltage.3. Check if the fuse is on or off.
--------------------------------------	--

THE PRODUCTS ARE NOT POLISHED	<ol style="list-style-type: none">1. Check the amount of the polisher.2. Do not operate the appliance with the same polisher for a long time.3. Use only suitable and completely vegetable polisher.4. Check the products that are inserted to the appliance. Do not insert wet and dirty products.
--------------------------------------	--

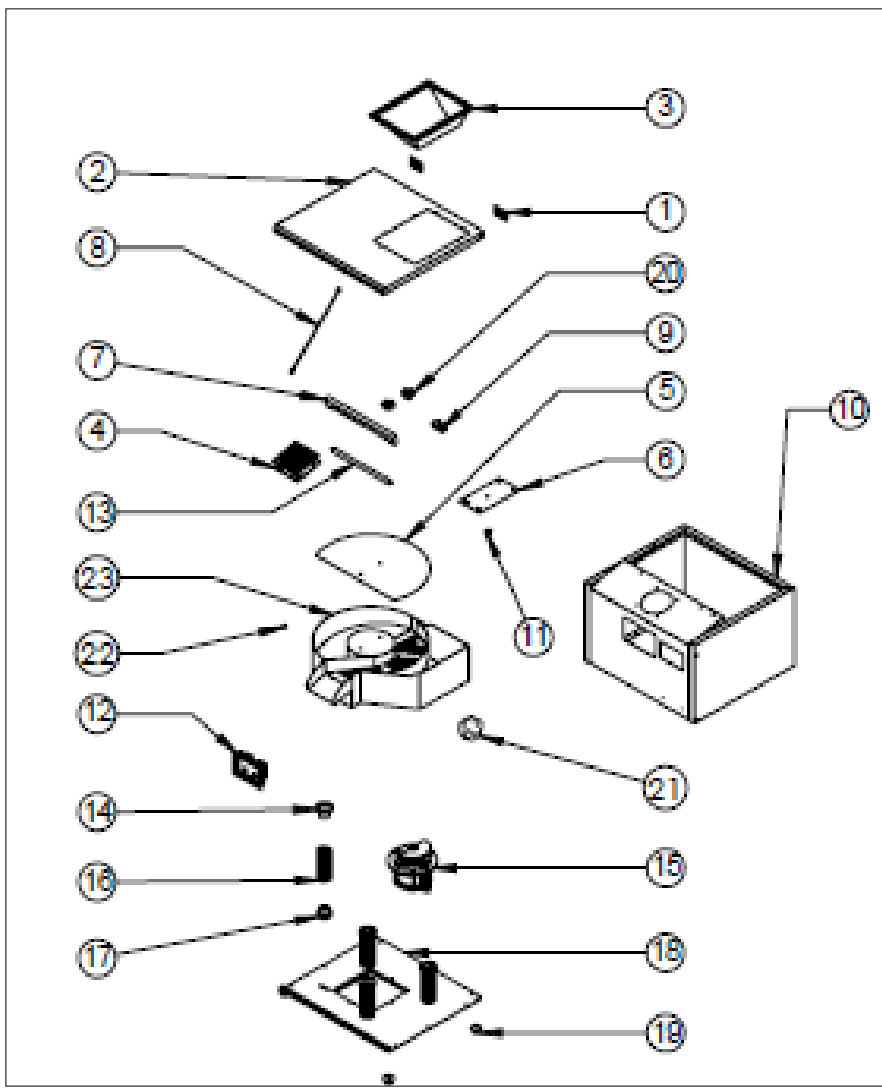
THE APPLIANCE STOPPED	<ol style="list-style-type: none">1. The appliance can stop due to low voltage. In this situation check the voltage.2. The fuse that doesn't enough amper is broken. In this situation place a new fuse3. Check the resistance.
------------------------------	---

<ul style="list-style-type: none">• If drying and polishing is not done at suitable quality• If any function of security doesn't work<ul style="list-style-type: none">➤ Do not use the appliance.

***If these problems are still going on, contact with our authorized services.**

FORK-SPOON POLISHER

G SPARE PART LIST-EXPLODING DRAWING

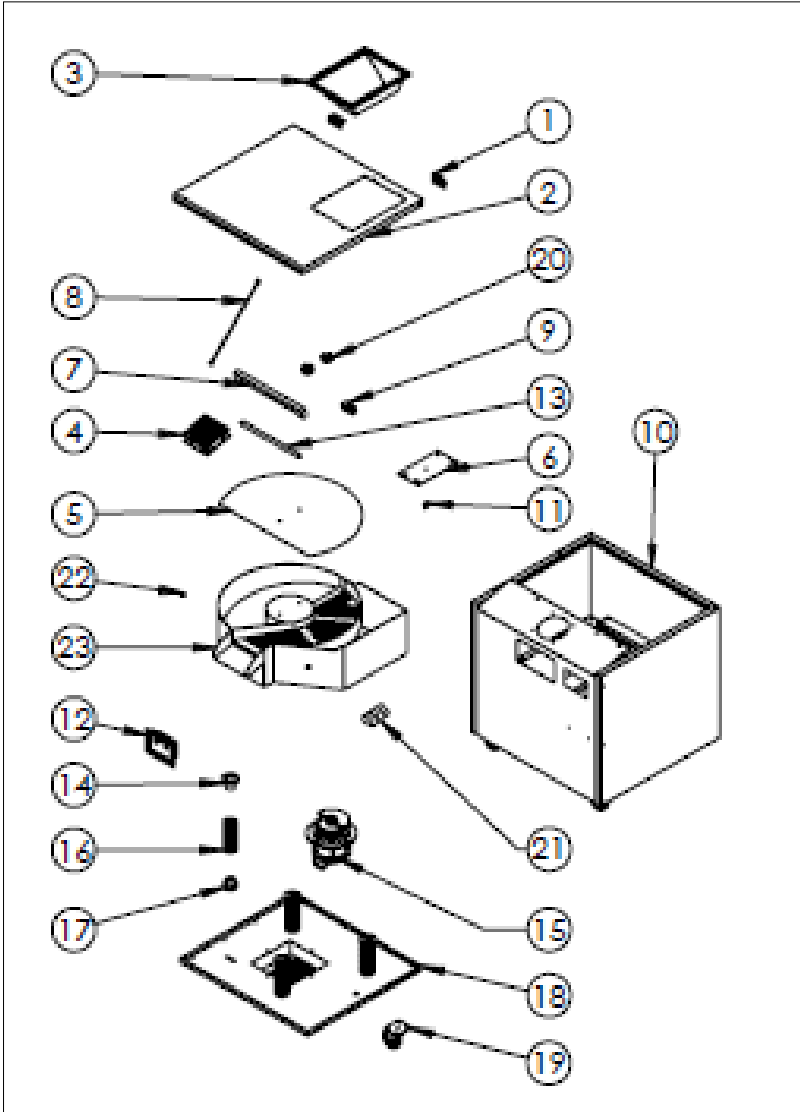


G SPARE PART LIST-EXPLODING DRAWING

PRODUCT CODE:EMP.CKP.01		
NO	PRODUCT NAME	P.CODE
1	HINGE	Y.EMP.CKP.01.001
2	TOP LID	Y.EMP.CKP.01.002
3	ENTRANCE UNIT	Y.EMP.CKP.01.003
4	FAN	Y.EMP.CKP.01.004
5	HELIX CLOSURE SHEETMETAL	Y.EMP.CKP.01.005
6	RESISTANCE	Y.EMP.CKP.01.006
7	ARMATURE	Y.EMP.CKP.01.007
8	LID WIRE	Y.EMP.CKP.01.008
9	SWITCH	Y.EMP.CKP.01.009
10	BASE FRAME	Y.EMP.CKP.01.010
11	LIMIT THERMOSTAT	Y.EMP.CKP.01.011
12	PANEL	Y.EMP.CKP.01.012
13	UV LAMP	Y.EMP.CKP.01.013
14	TOP CONNECTION WEDGE	Y.EMP.CKP.01.014
15	MOTOR	Y.EMP.CKP.01.015
16	SPRING	Y.EMP.CKP.01.016
17	BOTTOM CONNECTION WEDGE	Y.EMP.CKP.01.017
18	BOTTOM LID	Y.EMP.CKP.01.018
19	FEET	Y.EMP.CKP.01.019
20	THUMBNUIT	Y.EMP.CKP.01.020
21	GRANUAR 1 KG	Y.EMP.CKP.01.021
22	STOPPER	Y.EMP.CKP.01.022
23	INNER HELIX DRUM	Y.EMP.CKP.01.023

FORK-SPOON POLISHER

G SPARE PART LIST-EXPLODING DRAWING

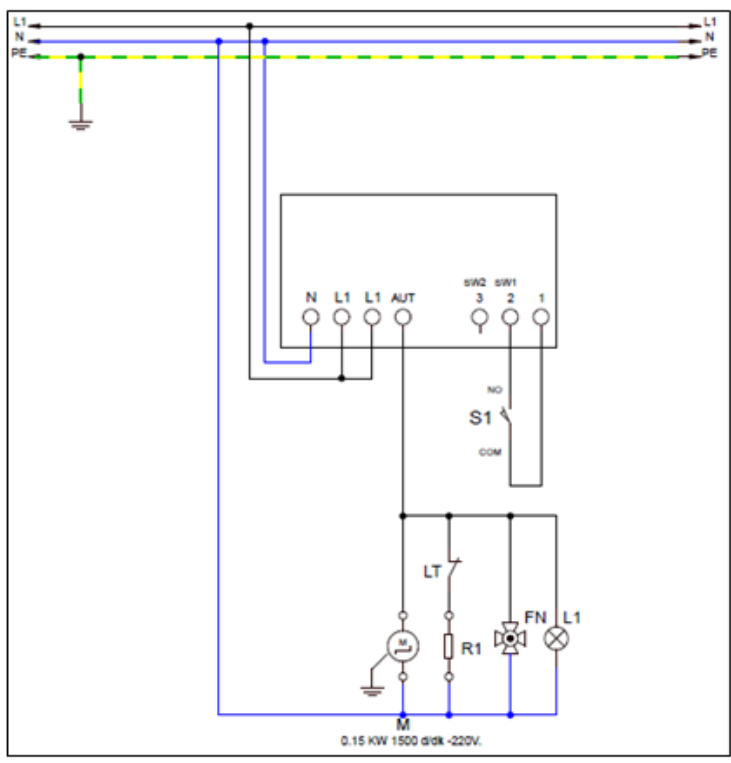


G SPARE PART LIST-EXPLODING DRAWING

PRODUCT CODE:EMP.CKP.02		
NO	PRODUCT NAME	P.CODE
1	HINGE	Y.EMP.CKP.02.001
2	TOP LID	Y.EMP.CKP.02.002
3	ENTRANCE UNIT	Y.EMP.CKP.02.003
4	FAN	Y.EMP.CKP.02.004
5	HELIX CLOSURE SHEETMETAL	Y.EMP.CKP.02.005
6	RESISTANCE	Y.EMP.CKP.02.006
7	ARMATURE	Y.EMP.CKP.02.007
8	LID WIRE	Y.EMP.CKP.02.008
9	SWITCH	Y.EMP.CKP.02.009
10	BASE FRAME	Y.EMP.CKP.02.010
11	LIMIT THERMOSTAT	Y.EMP.CKP.02.011
12	PANEL	Y.EMP.CKP.02.012
13	UV LAMP	Y.EMP.CKP.02.013
14	TOP CONNECTION WEDGE	Y.EMP.CKP.02.014
15	MOTOR	Y.EMP.CKP.02.015
16	SPRING	Y.EMP.CKP.02.016
17	BOTTOM CONNECTION WEDGE	Y.EMP.CKP.02.017
18	BOTTOM LID	Y.EMP.CKP.02.018
19	WHEEL	Y.EMP.CKP.02.019
20	THUMBNUT	Y.EMP.CKP.02.020
21	GRANUAR 1 KG	Y.EMP.CKP.02.021
22	STOPPER	Y.EMP.CKP.02.022
23	INNER HELIX DRUM	Y.EMP.CKP.02.023

FORK-SPOON POLISHER

H ELECTRIC CIRCUIT SCHEMA



L1	Thermostat signal lamp
T1	Thermostat 100°C
R1	Resistance 450W
FN	Fan
CTR	Condenser 12.5 450 V
S1	Safety Sensor
M	Motor 0,15 KW 220V