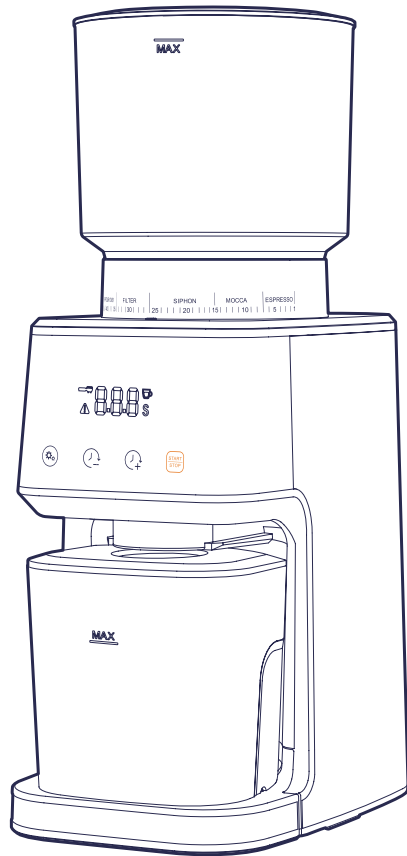

PROFESSIONAL CONICAL BURR
COFFEE GRINDER

BD-CG018



USER MANUAL

CONTENTS

- Important Safeguards 1
- Warning 2
- Parts Identification 3
- Specification 4
- Before First Use 4
- How to Use the Coffee Grinder 5
- Assemble and Disassemble the Bean Hopper · · 6
- Grind Size Setting Recommendations 7
- Control Panel Operation Instructions 7
- Making Better Quality Coffee ····· 9
- Cleaning 10
- Maintenance 11
- Troubleshooting 12
- Disposal 12

IMPORTANT SAFEGUARDS

When using electrical appliances, basic safety precautions should always be followed:

1. Carefully read all instructions before operating the appliance for the first time and save for future reference.
2. To protect against fire, electric shock and injury to persons, **do not** immerse cord, plugs or machine in water or other liquid.
3. Unplug from outlet when not in use, before putting on or taking off parts, and before cleaning. To unplug, grasp plug and pull from electrical outlet. Never pull cord.
4. Avoid contact with moving parts.
5. To reduce the risk of severe injury to persons or damage to the appliance, keep hands and utensils out of the coffee bean box while grinding, and when the appliance is plugged in.
6. **Do not** operate the grinder with a damaged cord or plug or after the appliance malfunctions, or is dropped or damaged in any manner. In this case, return the appliance to the approved Service Center for examination, repair, or electrical or mechanical adjustment.
7. The use of attachments not recommended or sold by may cause fire, electric shock or injuries.
8. **Do not** use outdoors.
9. **Do not** let cord hang over edge of table or counter or touch hot surfaces, including the stove.
10. Check Coffee bean box for presence of foreign objects before using.
11. Always operate the burr grinder with the lid securely in place.
12. **Do not** place on or near a hot gas or electric burner or in a heated oven.
13. This product has been designed for household use only. Any commercial use, inappropriate use or failure to comply with the instructions will void the manufacturer's Warranty.
14. This appliance is only used for roasted coffee beans grinding. **Do not** use the appliance for other intended use (such as hard seeds, spice, nuts, etc.).
15. The capacity of Grinding Chamber cannot exceed the maximum mark.
16. Every appliance is inspected strictly during mass production, and be tested with coffee beans for grinding, which may cause slight traces of use or residual coffee grounds. All machines are subject to stringent quality control. Practical tests using machines taken at random are conducted and this may explain any slight marks or coffee residue showing prior to use.

17. The appliance is not to be used by persons with reduced physical, sensory or mental capabilities, or lack of experience and knowledge, unless they have been given supervision or instruction.
18. Children shall not play with the appliance.
19. Switch off the appliance and disconnect from supply before changing accessories or approaching parts that move in use.
20. For an electronic copy of this manual, please contact our after sales support centre.
21. Always disconnect the appliance from the supply if it is left unattended and before assembling, disassembling or cleaning.
22. Cleaning and user maintenance shall not be made by children unless they are aged from 8 years and above and supervised.
23. This appliance shall not be used by children. Keep the appliance and its cord out of reach of children.

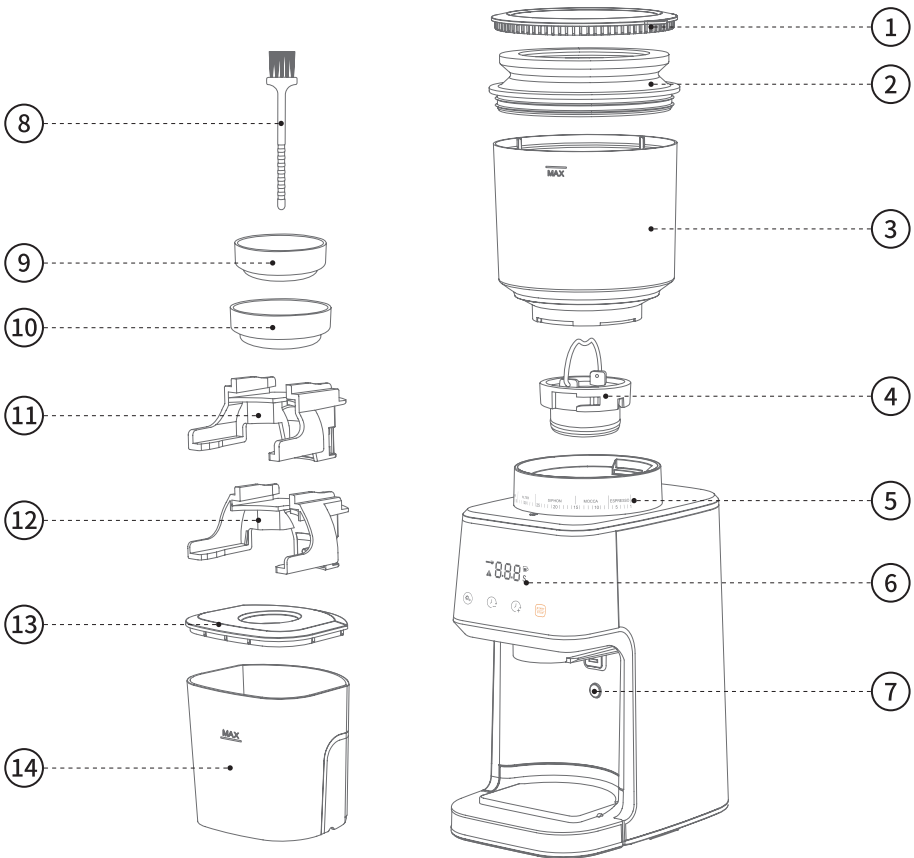
SAVE THESE INSTRUCTIONS

Warning

This appliance is for household use only. Any servicing other than cleaning and user maintenance should be performed by the nearest authorized Service Center.

- Do not immerse appliance in water.
- To reduce the risk of fire or electric shock, do not dismantle the appliance. Repair should be done by an authorized Service Center only.

Parts Identification



- | | |
|---|--|
| 1 Bean Hopper Lid | 2 Coffee Grounds Residual Cleaner |
| 3 Bean Hopper | 4 Stainless Steel Conical Burrs |
| 5 Grind Select Feature | 6 Control Panel |
| 7 Portafilter Activation Switch | 8 Cleaning Brush |
| 9 Coffee Dosing Ring Compatible with 53mm Portafilter | |
| 10 Coffee Dosing Ring Compatible with 58mm Portafilter | |
| 11 Portafilter Cradle 53mm | 12 Portafilter Cradle 58mm |
| 13 Grinding Chamber Lid | 14 Grinding Chamber |

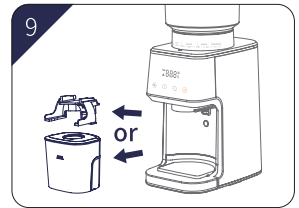
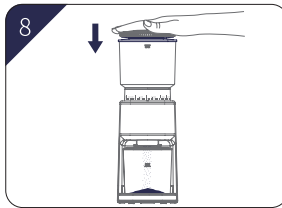
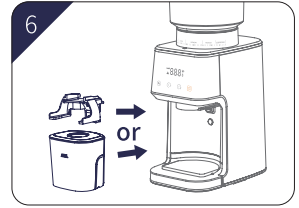
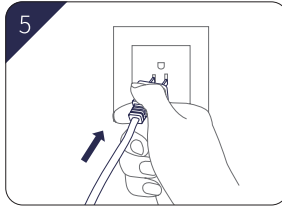
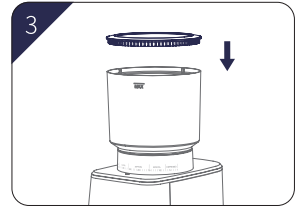
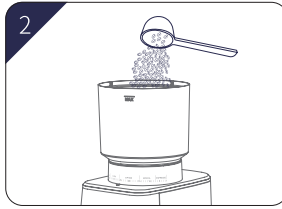
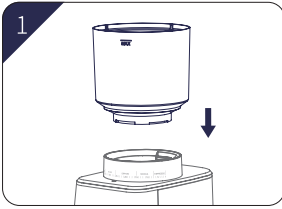
Specification

Model	BD-CG018
Rated Power	165W
Rated Voltage	120V
Bean Hopper Capacity	12.5oz
Grinding Chamber Capacity	5.3oz
Dimension	5.0*7.4*13.0 in
Color	Silver

Before First Use

Before using the coffee grinder, wash Bean Hopper, Cradles, Grinding Chamber, Grinding Chamber lid, and cleaning brush in warm soapy water and dry thoroughly. Wipe exterior of grinder with a soft damp cloth and dry thoroughly. Place grinder on flat level surface and plug power cord into 120V outlet.

How to Use the Coffee Grinder



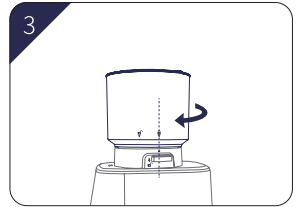
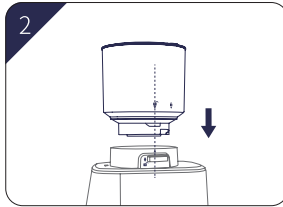
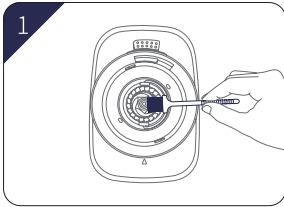
1. Assemble the Bean Hopper (Refer to the "Assemble and Remove the Bean Hopper").
2. Fill coffee beans into Bean Hopper.
3. Close the lid.
4. Select your Grind Size
The coffee grinder has 51 grind size options. To adjust the grind size, rotate the Bean Hopper and adjust from fine to coarse according to the type of coffee you want. (Refer to the "Grind Size Setting Recommendations").
5. Plug into a power outlet.
After the system is powered on, the buzzer beeps once, and the screen displays "888".
6. Place the Grinding Chamber or Cradle under the powder outlet.
7. If you place the Grinding Chamber, the screen default display 01 cup, 4 lights on. Double click the "setting" button to switch from the number of cups to the time, the screen default displays 10 seconds. Set the grinding time or the number of cups. Press the "Start/Stop" button to start working. (Refer to "Control Panel Operation Instructions").
If Cradle is placed, enter the grinding for espresso coffee, the screen default displays 8 seconds, 3 lights on. Set the grinding time, and then place the Portafilter.
8. After grinding, press the coffee residue cleaner and the coffee residue will come out of the product.
9. Remove the Grinding Chamber or Portafilter.

ENERGY SAVING FEATURE





The grinder will automatically switch off if not used for 3 minutes.

To reactivate the machine whilst in POWER SAVING/SLEEP MODE, press any button on the grinder control panel.

Assemble and Disassemble the Bean Hopper

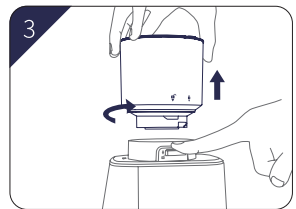
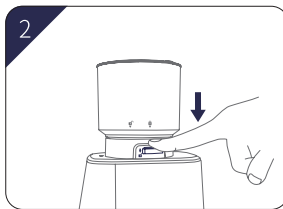
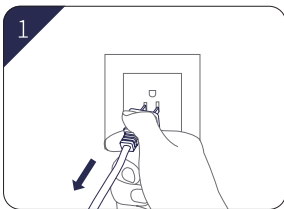


How to assemble the Bean Hopper:




1. Make sure the top part of the conical burr is clear. If not, please use the brush provided to clean the top part of the burr.
2. Align the unlock icon  on the Bean Hopper with the arrow  on the base.
3. Turn the Bean Hopper clockwise with your other hand until the lock icon  is aligned with the arrow .

NOTE:

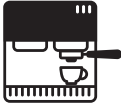





If Bean Hopper has not been locked into position, the "E1" message will be displayed on the control panel disabling the operation of the grinder for safety.



How to disassemble the Bean Hopper:





1. Make sure the coffee grinder is unplugged.
2. Press the Bean Hopper release lever located opposite  the grinding size markings.
3. Turn the Bean Hopper counter-clockwise until the unlock icon  aligns with the arrow  and lift it up.

Grind Size Setting Recommendations

	Espresso	Moccha	Siphon	Filter	Pour Over	French Press
Coffee Type						
Grind Size	Fine	Medium Fine	Medium	Lightly Coarse	Medium Coarse	Coarse
Grind Setting	1-7	8-15	16-26	27-34	35-43	44-51

Control Panel Operation Instructions



1. This unit has 4 buttons below:

-  - Setting button (switch the number of cups and time, and single cup grinding time settings)
-  - Time/Cup "-" button / reduce mode
-  - Time/Cup "+" button / incremental mode
-  - Start/Stop button / pulse mode





2. Grinding into Grinding Chamber



2.1 Plug into a power outlet, the buzzer beeps once, and the screen displays "888".

2.2 Place the Grinding Chamber, 4 lights on, the screen default display 01 cup(4 seconds / cup), each short press of "", that is, an additional cup, in the order of 1, 2, 3, 12. Each short press of "" decreases the number of cups.

2.3 Double click "" to switch from the number of cups to the time.

The default time is 10 seconds, and the selection range is 1s-60s.

When the time is selected from 01~15s. Each short press "" increases 0.1S, which is 1.1, 1.2, 1.3~14.9 in turn. Long press this key to increase the time rapidly. On the contrary, short press or long press "" is the same, and it will not cycle after reaching 1s.

When the time is selected from 16s to 60s. Each short press " " increases 1s, which is 16, 17, 18,..... 60 in sequence. It will not cycle after reaching 60s. Press this key for a long time, and the time increases rapidly. Conversely, short or long press " " is the same.


2.4 Under the display of cup number selection, long press the "Setting" button to enter the single cup working time selection, which is 4 seconds by default. Short press or long press the decrease or increase button, and the time will decrease or increase at an interval of 0.1 seconds. The minimum time is 3 seconds, and the maximum time is 5 seconds. After setting, short press the "Setting" button to exit. This setting has a memory function, which will be remembered even after power failure. Press the "Start/Stop" button to start working.

2.5 After setting the time/cup, press the " " to start grinding beans. If you want to stop grinding, press the " " again.

3. Grinding into Portafilter

3.1 Insert the Portafilter Cradle 53mm or Portafilter Cradle 58mm, press the decrease or increase button for a short or long time, and the time will decrease or increase at an interval of 0.1 seconds. The minimum time is 5 seconds, and the maximum time is 15 seconds. Press the "Start/Stop" button to start working.

3.2 After setting the time, touch the Portafilter Activation Switch to start the work. When the set time is over, the grinding will be stopped automatically. If it is necessary to stop halfway, touch the micro switch with the funnel again to stop. There is no need to press the "Start/Stop" button on the panel.

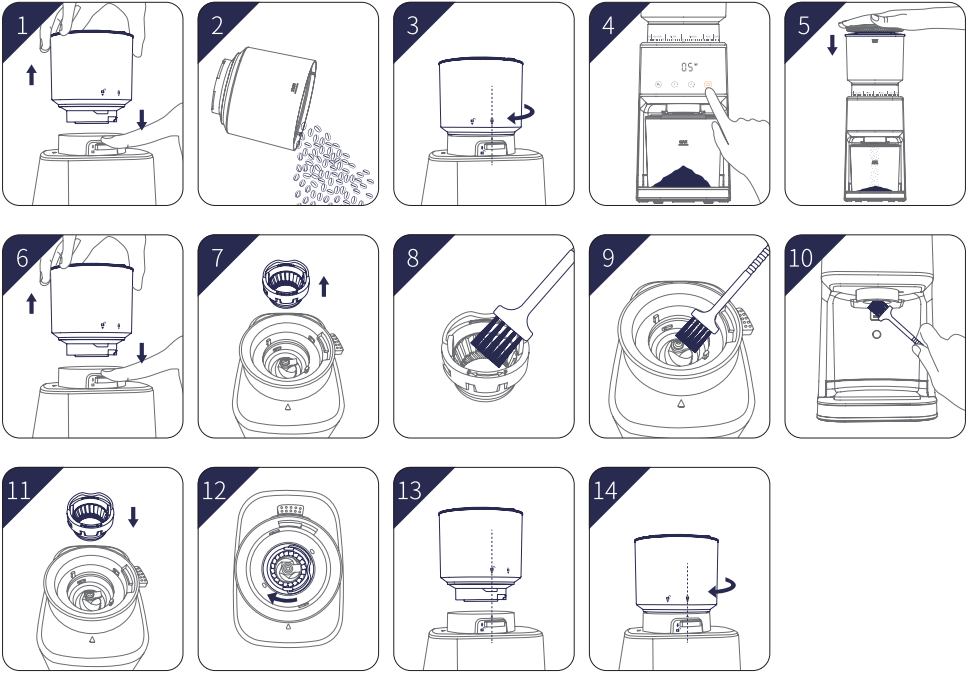
3.3 Press and hold the " " for a long time, the machine will enter the pulse working mode, and the screen will display the working time 8.1, 8.2, 8.3,... The maximum grinding time is 20 seconds.

4. In both modes, Long press the " " and "T  " buttons. Screen display " ", turn off the buzzer; Long press the " " and "T  " buttons. Screen display " ", turn on the buzzer.

Making Better Quality Coffee

- Fresh coffee grounds is the key factor for making mellow and delicious coffee.
- The coffee flavor and concentration can be adjusted according to personal preferences, and the type, amount and grinding fineness of coffee beans can be changed to achieve the ideal taste.
- It is better to use fresh coffee beans marked with the baking date.
- Please store coffee beans in a dark, low temperature and dry environment.
- If possible, use vacuum packaging.
- Buy coffee beans in small quantities to reduce storage time, and it is better to store them for no more than one week each time.
Once coffee beans are ground into coffee powder, their aromatic flavor will be lost soon. In order to achieve the best brewing effect, it is necessary to brew coffee immediately after grinding the coffee powder.
- Do not store coffee beans in Bean Hopper for a long time.
- When the machine is stored after use, please operate the machine to grind the remaining coffee beans and clean them.
- Clean Bean Hopper and Grinding Chamber regularly.

Cleaning



Regular cleaning helps the burrs achieve consistent grinding results which is especially important.

1. Unlock Bean Hopper
2. Remove beans
3. Lock Bean Hopper
4. Run grinder until empty
5. Press Coffee Grounds Residual Cleaner
6. Remove Bean Hopper
7. Remove upper burr
8. Clean upper burr with the cleaning brush
9. Clean lower burr with the cleaning brush
10. Clean grinder outlet with brush
11. Push upper burr firmly into position
12. Lock upper burr
13. Align Bean Hopper into position
14. Lock Bean Hopper

Maintenance

- Please press the coffee grounds residual cleaner after each use to avoid coffee grounds remaining in the machine and falling everywhere.
- To keep all your coffee's aroma and to avoid degradation of the ground coffee, empty the grinding chamber after each use.
- Always unplug from the power outlet before cleaning.
- Never place the grinder, power supply cord, or plug in water or under running water.
- Do not use strong detergents or abrasive pads to clean the appliance.
- Clean the lids and the ground coffee holder in warm, soapy water.
- To remove the upper burr, hold the upper burr and turn counterclockwise, then raise it vertically to remove it.
- Clean the upper burr with the cleaning brush.
- Carefully clean the inside of the coffee bean box with a damp cloth.
- To replace the upper burr, insert the burr and turn it once in the clockwise direction. For proper alignment, residual coffee and coffee grounds in the lower burr will need to be cleared.

Troubleshooting

Code in Display	Trouble Description	Trouble Solution
E1	No Bean Hopper or Bean Hopper is not connected tightly.	Assembly the Bean Hopper or tighten the Bean Hopper until the micro switch is closed, once Bean Hopper is close then error code E1 in display disappears.
	Motor PTC overheat protection under abnormal conditions such as powder blockage.	Unplug the power, clean the machine, and wait for the machine to cool down.
E2	Continuous operation 4 cycles, power off automatically to protect the unit.	Unplug the power cord, wait for 10 minutes to cool down then restart.

If your problem is not listed, please contact **Customer Support** at support@shardor1.com.

Disposal

This product should not be disposed of with other household wastes. To prevent possible harm to the environment or human health from uncontrollable waste disposal, it should be recycled responsibly.

Thank you for purchasing the **Coffee Grinder**



C: 100 M: 98 Y: 58 K: 18

尺寸：150x210mm

材质：128g 双面铜版纸、四色印刷

装订方法：骑马式装订